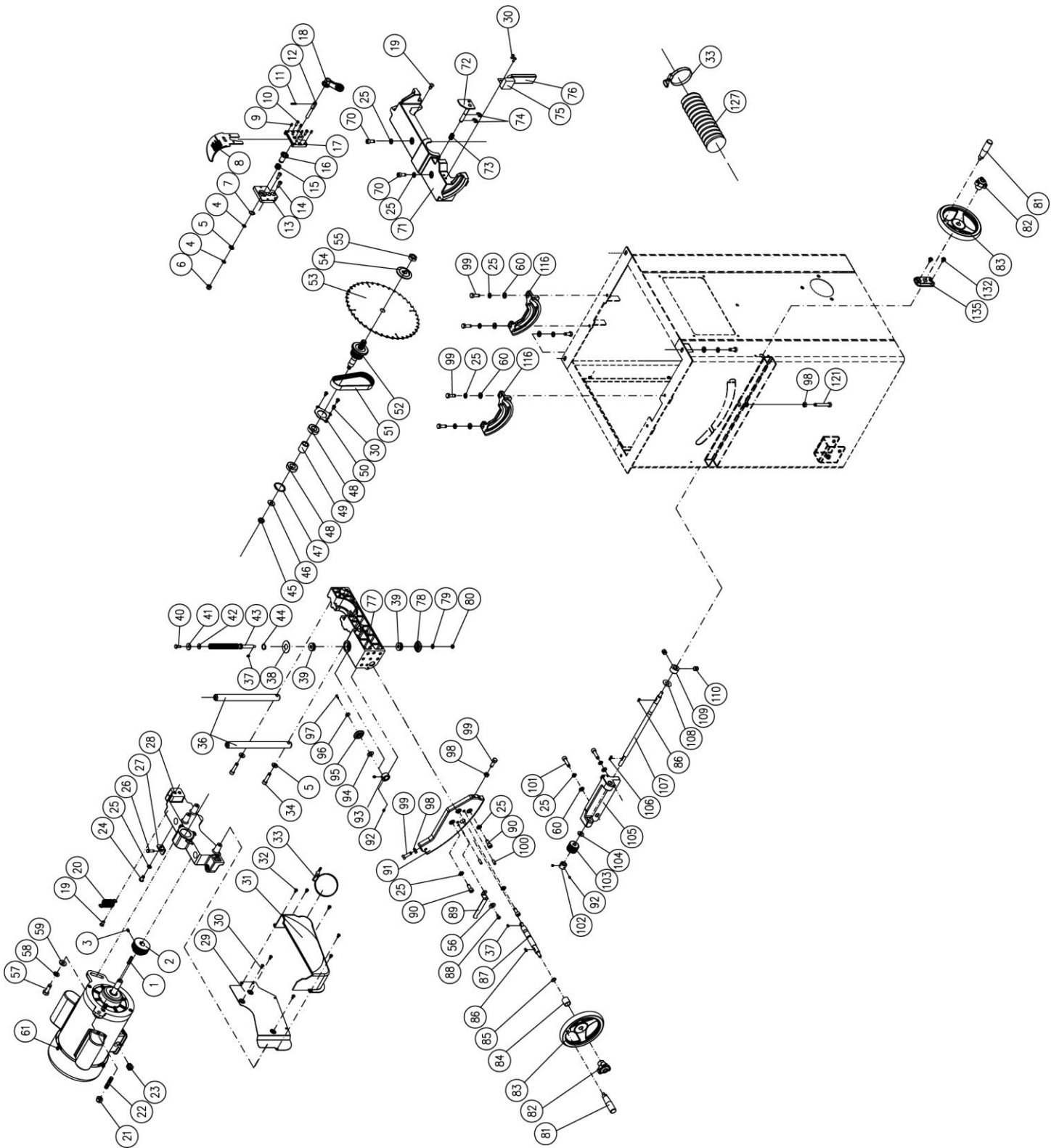


11. Деталировка

11.1 Motor and Trunnion – Exploded View

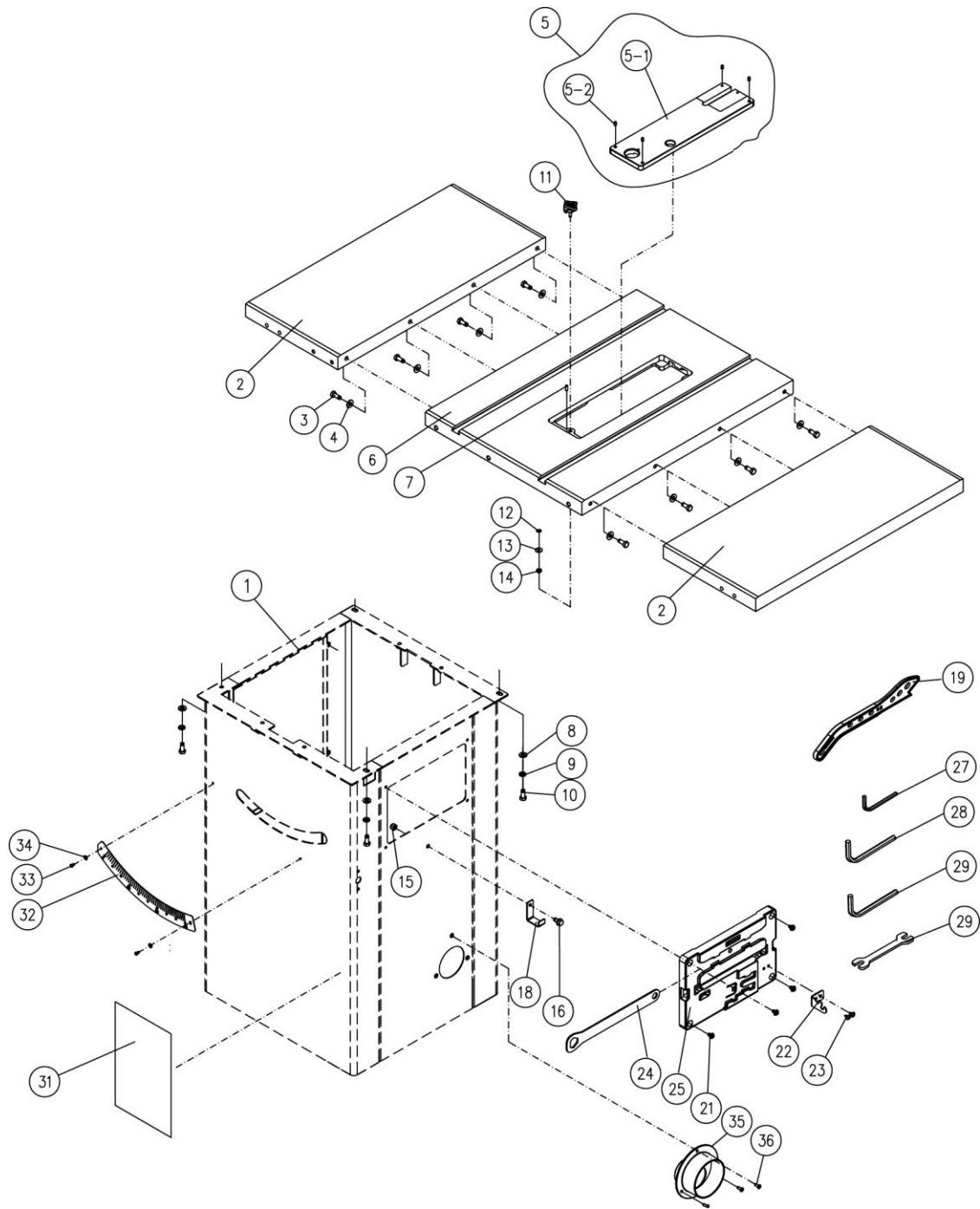


11.1 Motor and Trunnion – Parts List

Index No	Part No	Description	Size	Qty
1	6291479	Key, Dbl Rd Hd	5x5x30mm	1
2	JPS10CS-102E	Motor Pulley		1
3	TS-2276081	Socket Set Screw	M6-1.0Px8	2
4	JPS10CS-104	Wave Washer	WW-8	2
5	TS-0680041	Flat Washer	M8	1
6	TS-1541031	Nylon Lock Hex Nut	M8-1.25P	3
7	F006042	C-Retaining Ring, Ext	STW-14	1
8	JPS10TSC-108	Low Profile Riving Knife		1
9	TS-2276081	Socket Set Screw	M6-1.0Px8	4
10	TS-1533052	Phillips Pan Hd Machine Screw	M5-0.8Px16	2
11	JPS10TSC-111	Pin		1
12	JPS10TSC-112	Bolt		1
13	JPS10TSC-113	Riving Knife Clamp Base		1
14	TS-1504031	Socket Head Cap Screw	M8-1.25Px16	2
15	JPS10TSC-115	Spring		1
16	JPS10TSC-116	Bushing		1
17	JPS10TSC-117	Riving Knife Clamp Plate		1
18	JPS10TSC-118	Lock Handle		1
19	JPS10CS-119	Bolt		2
20	JPS10CS-120	Spring		1
21	TS-2342101	Nylon Lock Nut	M10-1.5P	1
22	JPS10CS-122	Shaft		1
23	JPS10CS-311	Strain Relief	SB7R-1	1
24	TS-1504031	Socket Head Cap Screw	M8-1.25x16	1
25	TS-2361081	Lock Washer	M8	16
26	TS-1482041	Hex Cap Screw	M6-1.0x 20	1
27	JPS10CS-127	Bracket		1
28	JPS10CS-128	Level Bracket		1
29	JPS10CS-129	Cover		1
30	TS-1533042	Phillips Pan Hd Machine Screw	M5-0.8Px12	8
31	JPS10CS-131	Dust Cover		1
32	TS-1533032	Phillips Pan Hd Machine Screw	M5-0.8Px8	5
33	JPS10TSC-1112	Hose Clamp	60-80mm	2
34	TS-1504071	Socket Head Cap Screw	M8-1.25 x 35	2
36	JPS10TSC-158	Guide Bar		2
37	JWP12-118	Key, Dbl Rd Hd	4x4x8mm	2
38	JPS10TSC-162	Plate		1
39	BB-51100	Thrust Bearing	51100	2
40	TS-1482031	Hex Cap Screw	M6-1.0Px16	1
41	TS-1550041	Flat Washer	M6	1
42	TS-1550041	Flat Washer	M6	1
43	JPS10TSC-166	Lead Screw		1
44	F006044	C-Retaining Ring, Ext	STW-16	1
45	TS-2342101	Nylon Lock Hex Nut	M10-1.5P	1
46	TS-1550071	Flat Washer	M10	1
47	F006033	C-Retaining Ring, Int	RTW-35	1
48	BB-6003ZZ	Ball Bearing	6003ZZ	2
49	JPS10TSC-176	Spacer		1
50	JPS10TSC-177	Bearing Cover		1
51	JPS10CS-151	Belt	139J-7	1
52	JPS10TSC-180	Arbor	5/8"	1
53	JPS10TSR-131E	Blade	250 x 30mm	1
54	JPS10TSC-182	Arbor Flange	5/8"	1
	JPS10TSC-182E	Arbor Flange	M30mm	
55	JWTS10-133	Arbor Nut	5/8"-12	1
56	TS-1550031	Flat Washer	M5	1

Index No	Part No	Description	Size	Qty
57	TS-1491041	Hex Cap Screw	M10-1.5Px30	1
58	TS-2361101	Lock Washer	M10	1
59	TS-1550071	Flat Washer	M10	1
60	TS-1550061	Flat Washer	M8	16
61	JPS10TSC-148E-230	Motor	2HP 1PH 230V	1
	JPS10TSC-148AE-400	Motor	2.5HP 3PH 400V	1
	JPS10TSC-148EMF	Motor Fan (not shown)	Ø160mm	1
	JPS10TSC-148EMFC	Motor Fan Cover (not shown)		1
	JPS10TSC-148ECS	Centrifugal Switch (not shown)		1
	JPS10TSC-148ESCC	Starting Capacitor Cover (not shown)	400MFD/125VAC	1
	JPS10TSC-148ERCC	Running Capacitor Cover (not shown)	50µF/350VAC	1
	JPS10TSC-148JB	Junction Box (not shown)		1
	JPS10TSC-148JBC	Junction Box Cover (not shown)		1
70	TS-1504051	Socket Head Cap Screw	M8-1.25Px25	2
71	JPS10CS-171	Trunnion Base		1
72	JPS10TSC-130	Spindle Lock Paddle		1
73	JPS10TSC-128	Spring		1
74	F006080	E-Retaining Ring	ETW-9	2
75	JPS10CS-175	Sponge		1
76	JPS10CS-176	Dust Cover		1
77	JPS10TSC-168	Lower Bracket		1
78	JPS10CS-178	Bevel Gear	Left	1
79	JPS10CS-1	Flat Washer	M6	1
80	JPS10CS-1	Nylon Lock Nut	M6-1.0	1
81	JPS10CS-181	Handle		2
82	JPS10CS-182	Knob		2
83	JPS10CS-183	Handwheel		2
84	JPS10CS-184	Bushing		1
85	JPS10TSC-198	O-Ring	P11	1
86	JPS10CS-186	Key	4x4x12	2
87	JPS10CS-1	Lead Screw		1
88	JPS10CS-1	Pan Head Screw	M5-0.8Px12	1
89	JPS10CS-189	Angle Pointer		
90	JPS10CS-1	Socket Head Cap Screw	M8-1.25x25	3
91	JPS10CS-191	Angle Plate		1
92	JPS10CS-1	Set Screw	M5-0.8x5	4
93	JPS10CS-193	Bushing		1
94	JPS10CS-1	Flat Washer	M10	1
95	JPS10CS-1	Bevel Gear	Right	1
96	JPS10CS-1	Flat Washer	M4	1
97	JPS10CS-1	Pan Head Screw	M4-0.7x10	1
98	JPS10CS-1	Hex Nut	M8-1.25	2
99	JPS10CS-1	Hex Cap Bolt	M8-1.25x25	6
100	JPS10CS-1100	Spring Pin	6x25	2
101	TS-1504061	Socket Head Cap Screw	M8-1.25x30	2
102	JPS10CS-1102	Bushing		1
103	JPS10CS-1103	Worm Shaft		1
104	JPS10CS-1104	Washer		1
105	JPS10CS-1105	Worm Shaft Bracket		1
106	JPS10CS-1106	Key		1
107	JPS10CS-1107	Shaft		1
108	JPS10CS-1108	Copper Washer		1
109	JPS10CS-1109	Bushing		1
110	TS-1523011	Set Screw	M6-1.0x6	2
116	JPS10TSR-173	Front & Rear Trunnion		2
121	JPS10CS-1	Hex Cap Bolt	M8-1.25x55	2
127	JPS10CS-1127	Hose	2.5"x800mm	1
132	JPS10CS-1	Pan Head Screw	M6-1.0x10	2
135	JPS10CS-1135	Bracket		1

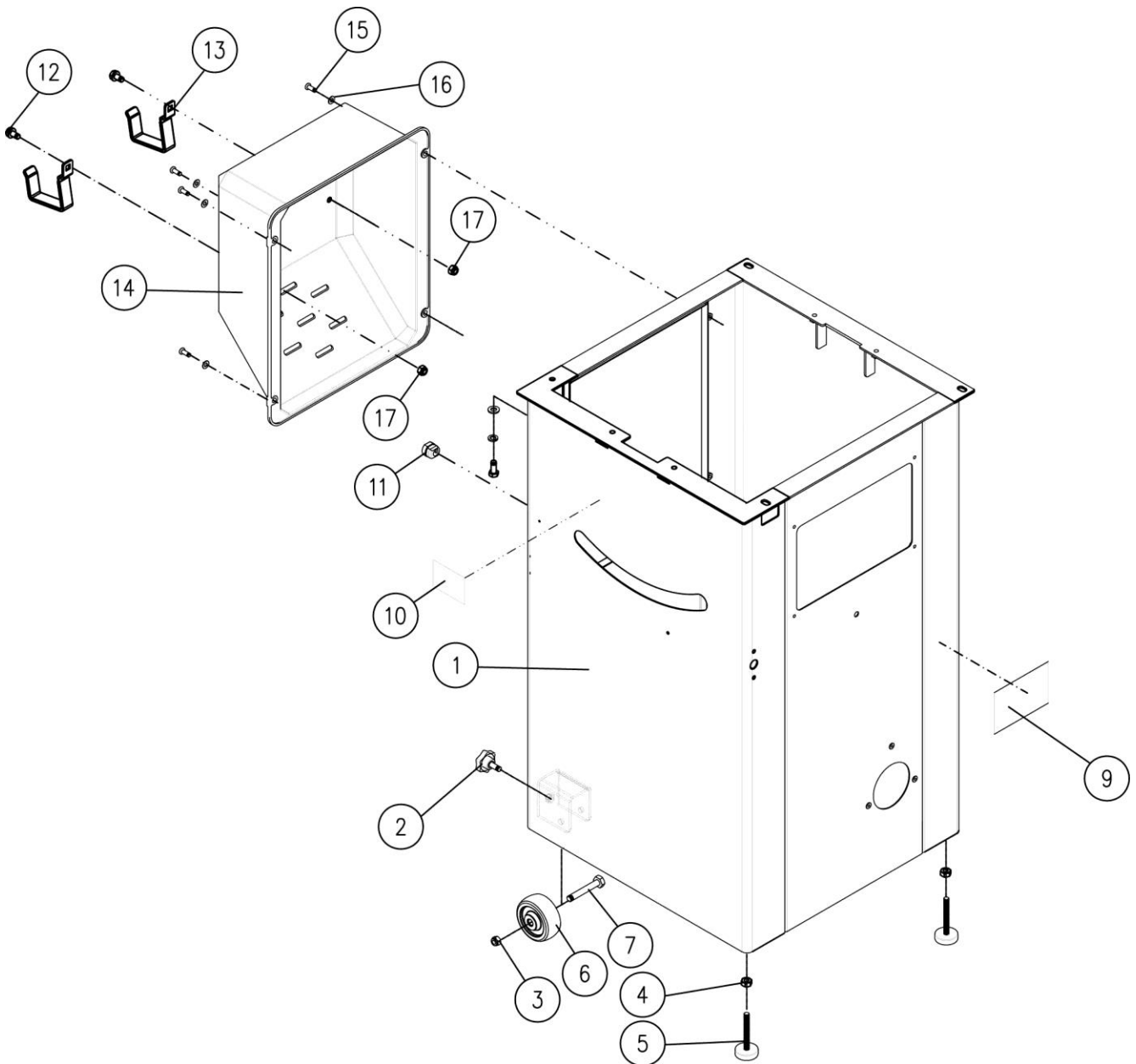
11.2 Table Assembly– Exploded View



11.2 Table and Assembly– Parts List

Index No	Part No	Description	Size	Qty
1	JPS10CS-301	Cabinet		1
2	JPS10CS-302	Cast Wings (includes #3,4)		2
3	TS-1490031	Hex Cap Screw	M8-1.25x20	8
4	TS-1550061	Flat Washer	M8	8
5	JPS10CS-205	Zero Clearance Insert Assembly (#5-1, 5-2)		1
5-1	JPS10CS-2051	Zero Clearance Insert		1
5-2	TS-1522041	Socket Set Screw	M5-0.8x12	4
6	JPS10CS-206	Main Table		1
7	6295178	Spring Pin	3x10 mm	1
8	TS-1550061	Flat Washer	M8	4
9	TS-2361081	Lock Washer	M8	4
10	TS-1490031	Hex Cap Screw	M8-1.25x20	4
11	JPS10TSC-211	Lock Knob		1
12	JPS10TSC-212	Spring	WW-6	1
13	TS-1550031	Flat Washer	M5	1
14	TS-1541011	Nylon Lock Hex Nut	M5-0.8	1
15	TS-1541031	Nylon Lock Hex Nut	M8-1.25	3
16	TS-1490021	Hex Cap Screw	M8-1.25x16	1
18	JPS10TSC-218	Hook		1
19	JPS10TSR-103	Push Stick		1
21	TS-1534032	Pan Head Screw	M6-1.0x10	4
22	JPS10TSC-222	Seat		1
23	ST059304	Phillips Pan Hd Tap Screw	M5x12	2
24	JPS10TSC-224	Arbor Wrench		1
25	JPS10TSC-225	Tool Storage		1
27	5640841	Hex Wrench	2.5mm	1
28	TS-152705	Hex Wrench	4mm	1
29	TS-152707	Hex Wrench	6mm	1
30	JPS10TSR-104	Open End Wrench	11/13 mm	1
31	JWS20-103	JET Logo	8"x11"	1
32	JPS10CS-232	Angle Scale		1
33	TS-2284082	Pan Head Screw	M4x8	2
34	TS-1550021	Flat Washer	M4	2
35	JPS10TSC-1113	Dust Chute	1-1/2"to 4"	1
36	TS-1533042	Phillips Pan Head Mach Screw	M5-0.8Px12	3

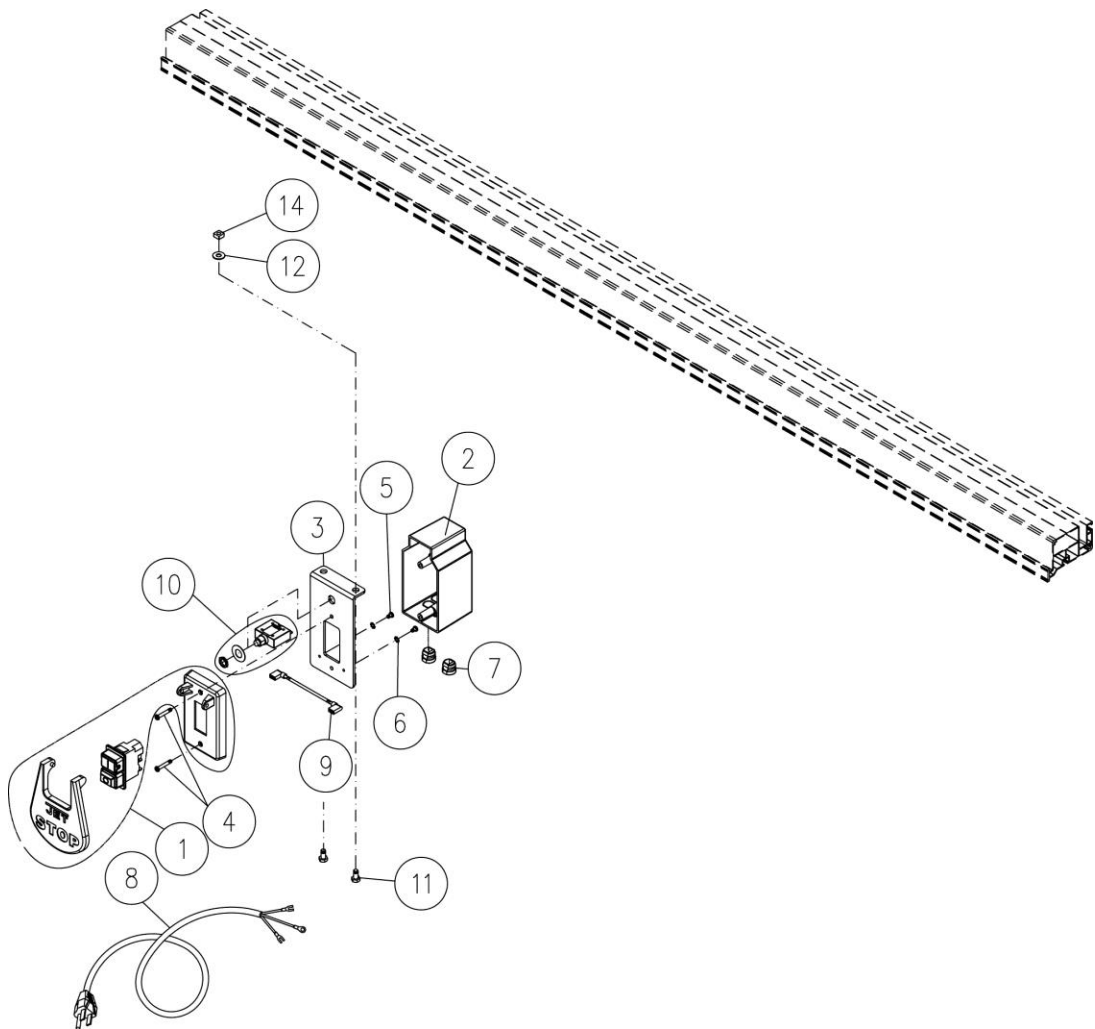
11.3 Cabinet Assembly – Exploded View



11.3 Cabinet Assembly – Parts List

Index No	Part No	Description	Size	Qty
1	JPS10CS-301	Cabinet		1
2	209-5018	Lock Knob	5/16-18NC x 3/4	2
3	TS-1541031	Nylon Hex Nut	M8	2
4	TS-1540061	Hex Nut	M8	2
5	JPS10TSC-305	Leveler		2
6	209-5021	Wheel		2
7	TS-1490111	Hex Cap Screw	M8 x 1.25P x 60	2
8	JPS10CS-308	Stripe (not shown)		1
9	LM000310	Warning Label		1
10	JPS10CS-310	I.D. Label		1
11	JPS10CS-311	Strain Relief	SB7R-1	1
12	TS-2228161	Hex Cap Screw	M8-1.25Px16	2
13	JPS10TSC-1105	Hook for Rip Fence		2
14	JPS10TSC-1106	Motor Cover		1
15	TS-1534052	Phillips Pan Head Mach Screw	M6-1.0Px16	4
16	TS-1550041	Flat Washer	M6	8
17	TS-1541031	Nylon Lock Hex Nut	M8-1.25P	2
18	JWS20-103	JET Logo (not shown)	8"x11"	1

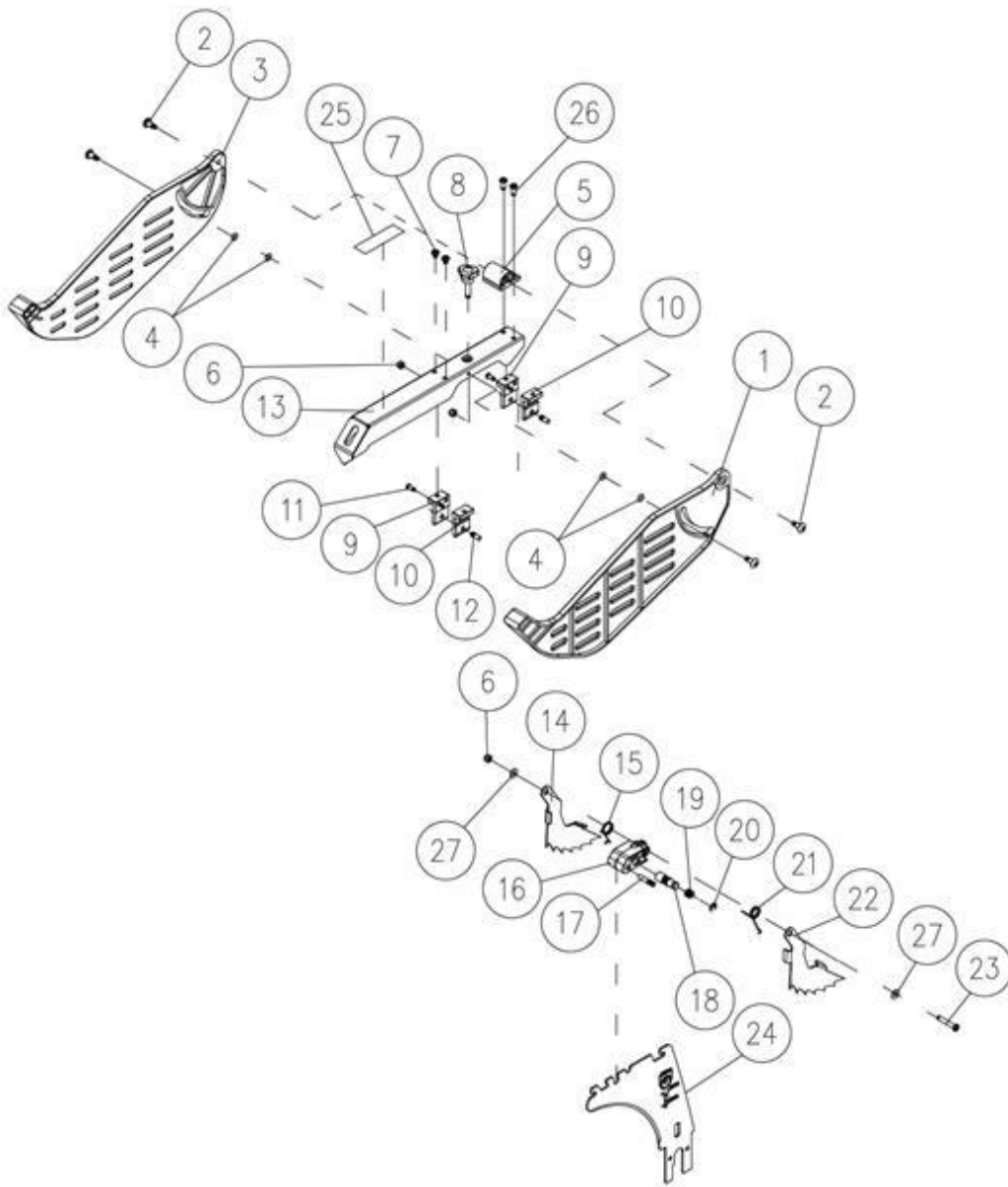
11.4 Switch Assembly – Exploded View



11.4 Switch Assembly – Parts List

Index No	Part No	Description	Size	Qty
1	JPS10TSC-401A	Magnetic Switch Kit	230V	1
	JPS10TSC-401ARU	Magnetic Switch Kit	400V	1
2	JPS10TSC-402	Switch Box	230V	1
	JPS10TSC-402ARU	Switch Box	400V	1
3	JPS10TSC-403	Switch Plate	230V	1
	JPS10TSC-403ARU	Switch Plate	400V	1
4	JPS10TSC-404	Machine Screw	M4x32	2
	JPS10TSC-404RU	Machine Screw		4
5	TS-2171012	Phillips Pan HD Mach Screw	M4-0.7x6	2
6	F002095	Lock Washer, Ext Tooth	M4	2
7	JPS10TS-351	Strain Relief	SB7R-3	2
8	JPS10CS-408AE	Power Cable		1
	JPS10CS-408BE	Power Cable w/o Plug	H05VV-F 4C x 1.0mm	1
9	JPS10TSC-409	Connection Wire		1
10	JPS10TSC-410B	Overload Protector	14A, 230V	1
11	TS-1482021	Hex Cap Screw	M6x12	2
12	TS-1550041	Flat Washer	M6	2
13	JPS10CS-413E	Motor Cable (not shown)		1
	JPS10CS-413BE	Motor Cable_400V (not shown)	H05VV-F 4C x 1.0mm	1
14	JPS10CS-414	Square Nut		2

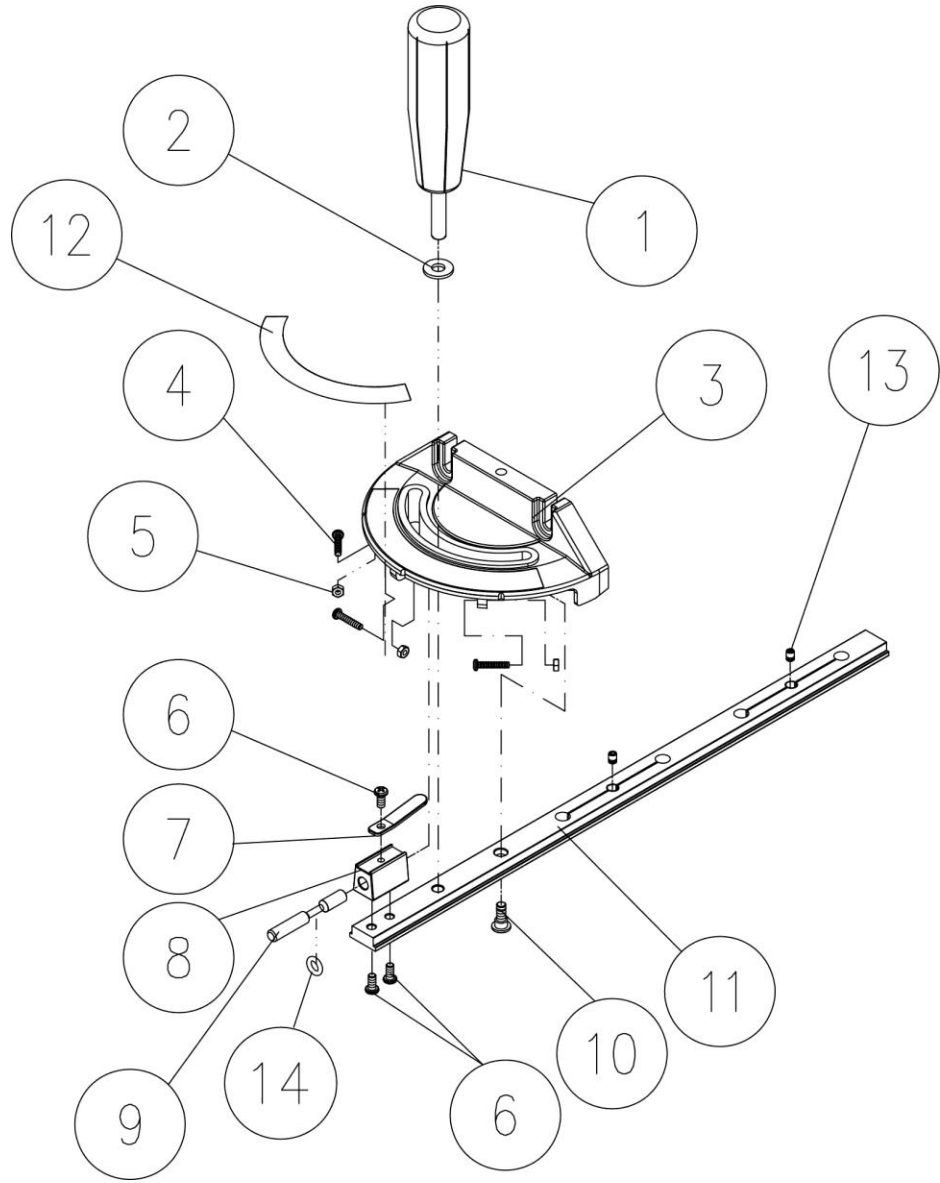
11.5 Blade Guard Assembly – Exploded View



11.5 Blade Guard Assembly – Parts List

Index No	Part No	Description	Size	Qty
	JPS-10CS-BGA	Blade Guard Assembly (#1 thru 27)		1
1	JPS10TSC-501	Right Side Blade Guard		1
2	JPS10TSC-502	Screw		4
3	JPS10TSC-503	Left Side Blade Guard		1
4	JPS10TSC-504	O-Ring	P006	4
5	JPS10TSC-505	Pivot Bracket		1
6	TS-1541011	Nylon Lock Hex Nut	M5-0.8P	3
7	F001200	Phillips Pan Hd Mach Screw	M5-0.8x6	2
8	JPS10TSC-508	Knob		1
9	JPS10TSC-509	Left Side Guard Seat		2
10	JPS10TSC-510	Right Side Guard Seat		2
11	TS-1532032	Phillips Pan Hd Mach Screw	M4-0.7x10	2
12	JPS10TSC-512	Pin		2
13	JPS10TSC-513	Support Arm		1
	JPS10TSR-AKPA	Anti-Kickback Pawl Assembly (#6, 14 thru 23, 27)		1
14	JPS10TSR-363	Left Side Anti-kickback Pawl		1
15	JPS10TSR-364	Spring		1
16	JPS10TSR-365	Anti-kickback Pawl Bracket		1
17	JPS10TSR-366	Pin		1
18	JPS10TSR-367	Shaft		1
19	JPS10TSR-368	Spring		1
20	JPS10TS-361	E-Retaining Ring	ETW-7	1
21	JPS10TSR-370	Spring		1
22	JPS10TSR-371	Right Side Anti-kickback Pawl		1
23	TS-2285302	Phillips Pan Head Machine Screw	M5-0.8Px30	1
24	JPS10TSC-524	Riving Knife		1
25	LM000315	Warning Label – Blade Guard	1"x5"	1
26	TS-1533042	Phillips Pan Hd Mach Screw	M5-0.8x12	2
27	TS-1550031	Flat Washer	M5	2

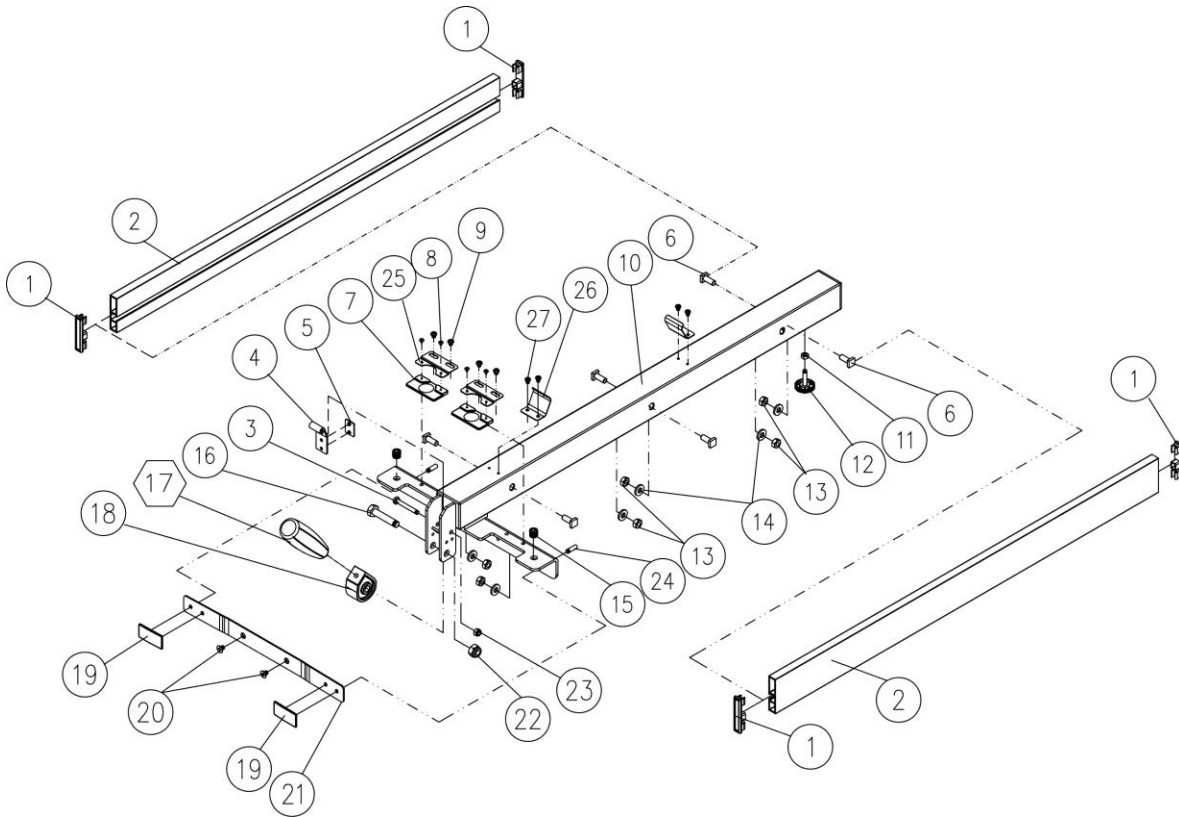
11.6 Miter Gauge Assembly – Exploded View



11.6 Miter Gauge Assembly – Parts List

.....	JPS10TSC-MG	Miter Gauge Assembly (#1 thru #14)	1	
1	JPS10TS-327	Handle	1
2	TS-0680041	Flat Washer	3/8"
2	TS-0680041	Flat Washer	1
3	JWTS10-329	Miter Gauge Body	1
4	TS-2284202	Phillips Pan Head Machine Screw	M40.7x20
4	TS-2284202	Phillips Pan Head Machine Screw	3
5	TS-1540021	Hex Nut	M4
5	TS-1540021	Hex Nut	3
6	TS-1533032	Phillips Pan Head Machine Screw	M5-0.8x10
6	TS-1533032	Phillips Pan Head Machine Screw	3
7	JWTS10-333	Pointer	1
8	JWTS10-334	Bracket	1
9	JWTS10-335	Stop Pin	1
10	JWTS10-336	Screw	1
11	JPS10TSC-611	Miter Bar	1
12	JPS10TS-340	Scale	1
13	F010450	Socket Set Screw	M8-1.25x5
13	F010450	Socket Set Screw	2
14	JPS10CS-614	O-Ring (not shown)	AS008
14	JPS10CS-614	O-Ring (not shown)	1

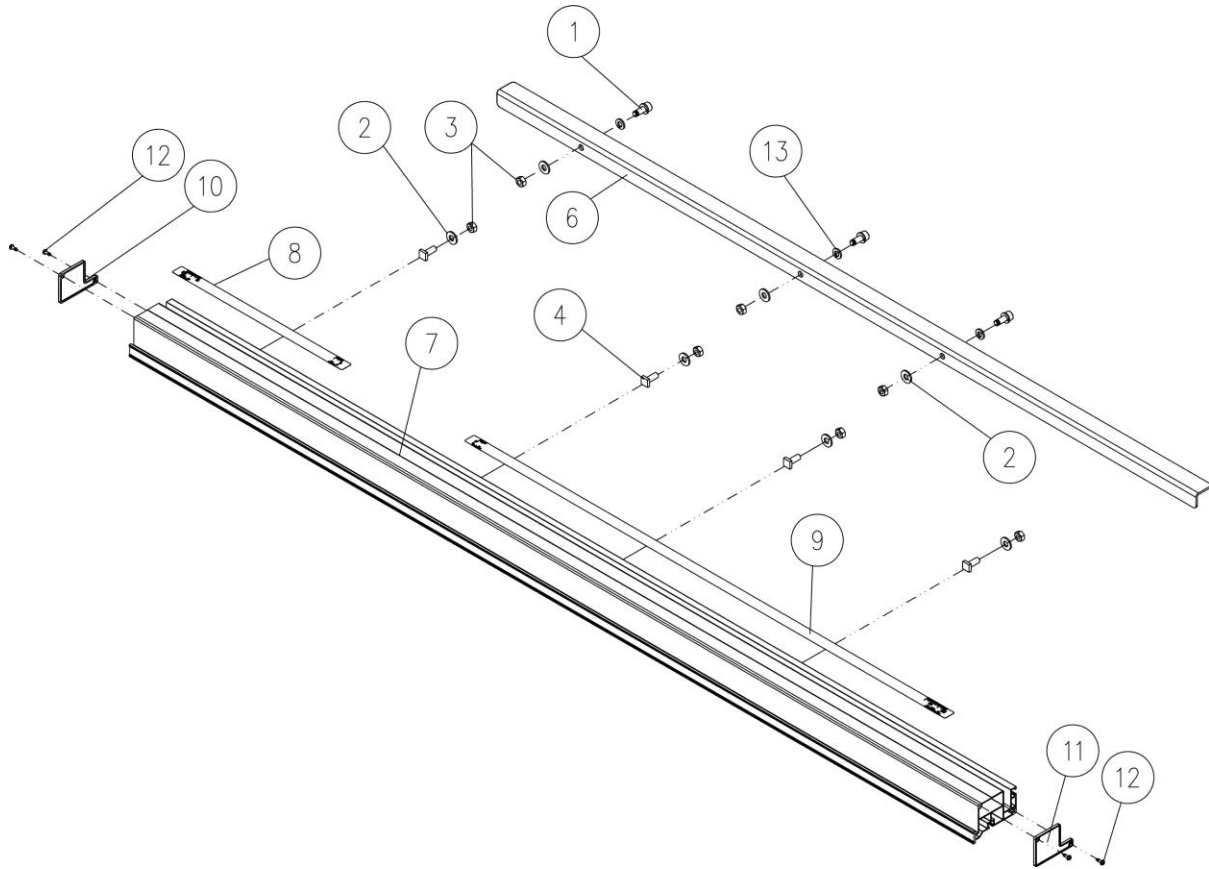
11.7 Fence Assembly – Exploded View



11.7 Fence Assembly – Parts List

Index No	Part No	Description	Size	Qty
	JPS10CS-FA	Fence Assembly (1# thru 27#)		1
1	JPSF1-101A	Side Plate End Cover		4
2	JPSF1-102A	Side Plate		2
3	TS-1482091	Hex Cap Screw	M6-1.0x45	1
4	JPSF1-115	Lock Plate		15
5	JPSF1-123	Stop Pad		1
6	JPSF1-103	Square Bolt	M8-1.25x20	6
7	JPS10CS-701	Scale Pointer		2
8	TS-2283061	Pan Head Screw	M3-1.0x6	4
9	JPS10CS-709	Pan Head Screw	M6-1.0x6	4
10	JPS10CS-710	Fence Body		1
11	TS-2311061	Hex Nut	M6-1.0	1
12	JPSF1-121	Adjustment Foot		1
13	TS-2311081	Hex Nut	M8-1.25	6
14	TS-1550061	Flat Washer	M8	6
15	JPSF1-109	Adjustment Screw		2
16	TS-1491081	Hex Cap Screw	M10-1.5x50	1
17	JPSF1-118	Handle		1
18	JPSF1-117	Lock Cam		1
19	JPSF1-112	Pad		2
20	JPS10CS-720	Flat Head Screw	M6-1.0Px8	2
21	JPSF1-111	Slide Hold Plate		1
22	TS-1541041	Nylon Insert Lock Nut	M10-1.5	1
23	TS-1541021	Nylon Insert Lock Nut	M6-1.0	1
24	TS-1523011	Set Screw	M6-1.0x6	2
25	JPS10CS-725	Pointer Bracket		2
26	JPS10CS-726	Spring Plate		2
27	JPS10CS-727	Pan Head Screw	M4-0.7x6	4

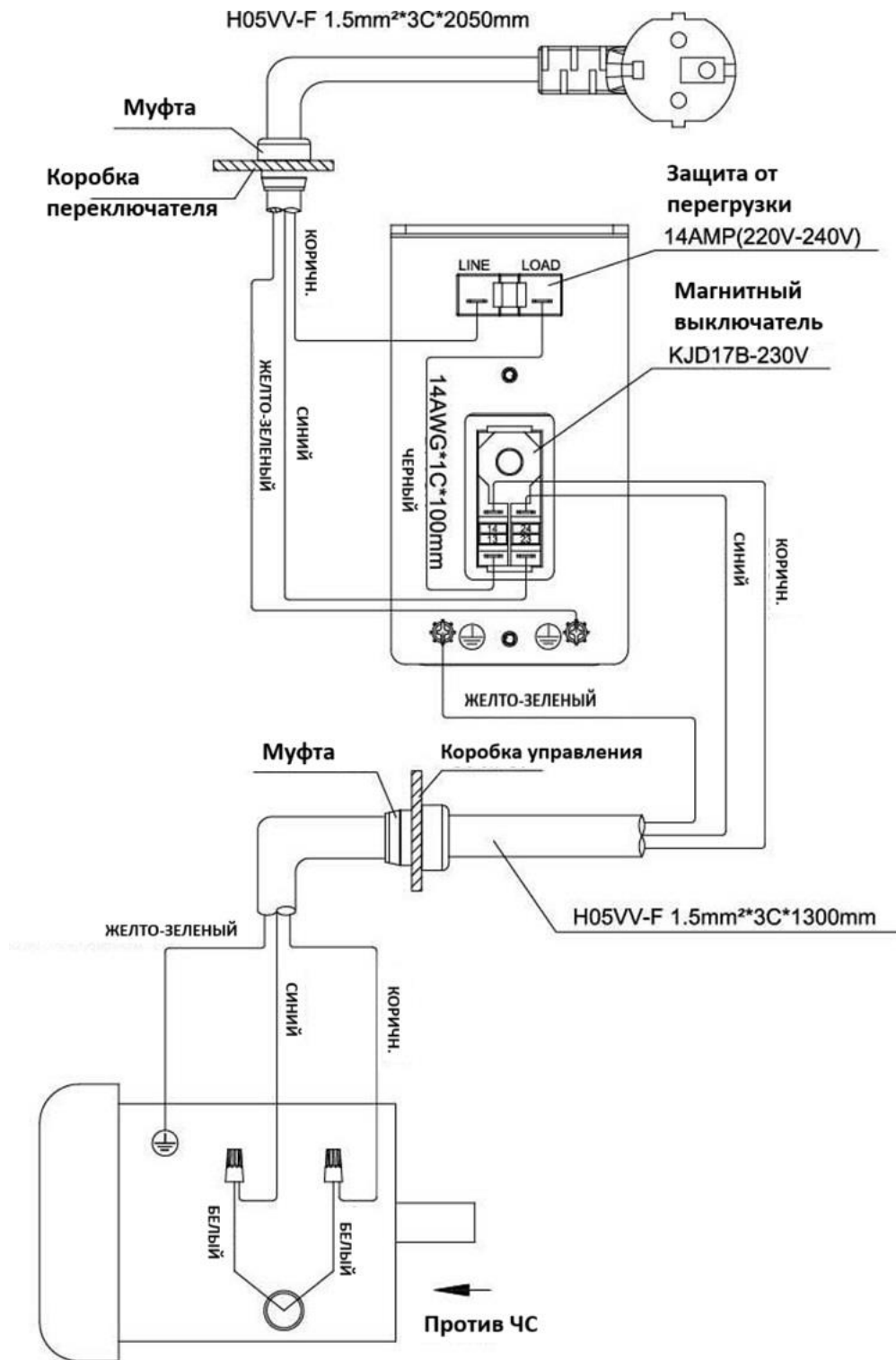
11.8 Rail Assembly – Exploded View



11.8 Rail Assembly – Parts List

.....	JPS10CS-36RS Rail Assembly (#1 thru #13) 36" 1
1 TS-1504051 Socket Head Cap Screw.....	M8-1.25x25 3
2 TS-1550061 Flat Washer	M8 7
3 TS-2311081 Hex Nut.....	M8-1.25 7
4 JPSF1-103 Square Bolt	M8-1.25x20 4
6 JPS10CS-806 Rear Rail.....	36" 1
7 JPS10CS-807 Front Rail	36" 1
8 JPS10CS-808 Left Scale.....	0"~12" 1
9 JPS10CS-809 Right Scale	0"~36" 1
10 JPS10CS-810 Left Rail Cover	 1
11 JPS10CS-811 Right Rail Cover.....	 1
12 TS-2284121 Machine Screw	M4-1.59x12 4
13 TS-2361081 Lock Washer.....	M8 3
.....	JPS10CS-RH Rail Hardware	36" 1

12. Схема электроподключения циркулярной пилы JPS-10CS-M (230V)



12.1 Схема электроподключения JPS-10CS-T (400V)

